





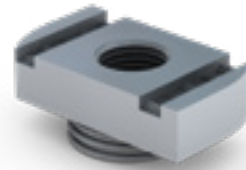
Channel Nut - Long Spring

Thread Size	Part No. 	Part No. 
M6	IC-NUT-M6-L-GA	IC-NUT-M6-L-SS
M8	IC-NUT-M8-L-GA	IC-NUT-M8-L-SS
M10	IC-NUT-M10-L-GA	IC-NUT-M10-L-SS
M12	IC-NUT-M12-L-GA	IC-NUT-M12-L-SS





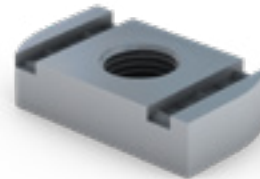
Channel Nut - Short Spring

Thread Size	Part No. 	Part No. 
M6	IC-NUT-M6-S-GA	IC-NUT-M6-S-SS
M8	IC-NUT-M8-S-GA	IC-NUT-M8-S-SS
M10	IC-NUT-M10-S-GA	IC-NUT-M10-S-SS
M12	IC-NUT-M12-S-GA	IC-NUT-M12-S-SS





Channel Nut - No Spring

Thread Size	Part No. 	Part No. 
M6	IC-NUT-M6-N-GA	IC-NUT-M6-N-SS
M8	IC-NUT-M8-N-GA	IC-NUT-M8-N-SS
M10	IC-NUT-M10-N-GA	IC-NUT-M10-N-SS
M12	IC-NUT-M12-N-GA	IC-NUT-M12-N-SS





Flat Washer

Size	Part No. 	Part No. 	Part No. Nylon
M6	M6-FW-GA	M6-FW-SS-A4	M6-FW-NY
M8	M8-FW-GA	M8-FW-SS-A4	M8-FW-NY
M10	M10-FW-GA	M10-FW-SS-A4	M10-FW-NY
M12	M12-FW-GA	M12-FW-SS-A4	M12-FW-NY



Internal Tooth Shake Proof Washer

Thread Size	Part No. 	Part No. 
M6	M6-SW-GA	M6-SW-SS-A4
M8	M8-SW-GA	M8-SW-SS-A4
M10	M10-SW-GA	M10-SW-SS-A4
M12	M12-SW-GA	M12-SW-SS-A4

